

1. [Marks

20

2. [Marks

= 2

= 6

3. [Marks

= 6

=

4. [M

(M
4

(LCS)

5. [M

6

7



8. Consider t

- a. [Marks
- b. [Marks
- c. [Marks

a) (g.

b) de

Dema

c)

x
x
(

9. [Marks 5] Express

$$= \log$$

$$= \log$$

10. [Marks 5] Solve

$$\ln(4)$$

$$\ln(4)$$

11. [Marks 5] Solve

$$4$$

12. [M

—

13. [M

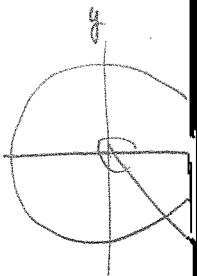
$f(x)$

14. [Marks 5]

$\frac{f(x)}{f(x)}$

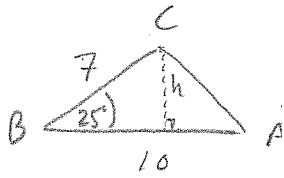
$\frac{f(x)}{f(x)}$

15. [Marks 5]

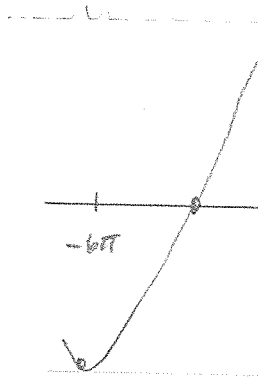


$\sec \theta$

16. [Marks 5] Find the a



17. [Marks 5] Graph $y =$
function.

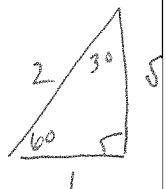


18. [Marks 5] S

$$2 \sin \theta +$$

$$2 \sin$$

$$\sin$$



$$\sin 60^\circ = \frac{5}{2}$$

19. [Marks 5] F

$a^3 +$

$a^3 -$

\log_a

\log_a

\log_a

\log_a

\log_a

\log_a

$\sin^2 \theta$

$1 + \tan$

$1 + \cot$

$\sin(A$

$\sin(A$

$\cos(A$

$\cos(A$